

The Fire Behavior Triangle describes the three environmental components that influence fire behavior: **Fuels, Weather,** and **Topography.** Changes in any one of these factors can greatly impact the intensity and severity of a wildfire and its ultimate impact on communities and forests. Reducing the one component we can control—fuels—is at the heart of many YWPFSC programs to protect our communities from wildfire.

2023 CALENDAR

BUILDING
COMMUNITY
& WATERSHED
RESILIENCE TO
WILDFIRE IN THE
YUBA COUNTY
FOOTHILLS
SINCE 1998



B. Cameron Fildes

FOUR FACETS OF WILDFIRE PREPAREDNESS

Wildfire preparedness is a year-round endeavor. Living in an ecosystem that evolved with fire means we must all adapt to its risks and impacts, from threats to life and property to smoke and power outages. We need to design and maintain our homes in ways that makes them less likely to ignite. Preparedness also means taking precautions to not start unplanned wildfires and being ready to evacuate when a wildfire does come close to home.

REDUCING WILDFIRE RISK AT HOME



IMAGE BY JANNIKE ALLEN

Wildfire Mitigation includes:

- Home Hardening
- Defensible Space
- Fire Resistant Landscaping

Read more in February, March, and April

WILDFIRE PREVENTION



IMAGE BY BEVERLY CAMERON FILDES

- Practice safe recreation
- Pay attention to Red Flag Warnings
- Support and participate in community-scale fuel reduction efforts

Read more in May, June, and November

EVACUATION READINESS



IMAGE BY BEVERLY CAMERON FILDES

- Prepare your family for evacuation
- Install a reflective address sign to help responders find your residence
- When a fire is nearby, evacuate early

Read more in July and December

LIVING WITH FIRE



IMAGE BY BEVERLY CAMERON FILDES

IMAGE BY FRANK DENATALE

- Stay healthy around wildfire smoke
- Be ready for power outages
- Help spot fires as an Oregon Peak Lookout volunteer
- Become a volunteer firefighter

Read more in August, September, and October

DECEMBER

SU	MO	TU	WE	TH	FR	SA
				1	2	3
4	5	6	7	8	9	10
11	12	13	14	15	16	17
18	19	20	21	22	23	24
25	26	27	28	29	30	31

JANUARY 2023

FEBRUARY

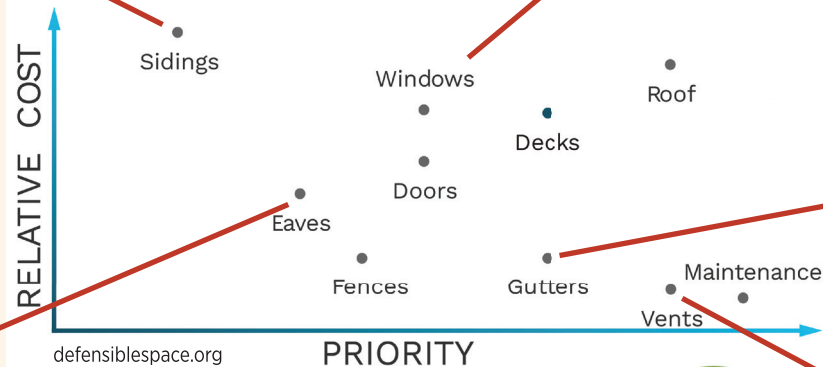
SU	MO	TU	WE	TH	FR	SA
			1	2	3	4
5	6	7	8	9	10	11
12	13	14	15	16	17	18
19	20	21	22	23	24	25
26	27	28				

SUNDAY	MONDAY	TUESDAY	WEDNESDAY	THURSDAY	FRIDAY	SATURDAY
1 NEW YEAR'S DAY	2	3	4	5	6 FULL MOON ☉	7
8	9	10	11	12	13	14
15 LUNAR NEW YEAR	16 MARTIN LUTHER KING JR. DAY	17	18	19	20	21 NEW MOON ☾
22	23	24	25	26	27	28
29	30	31				

HOME HARDENING

HOME HARDENING addresses the most vulnerable components of your house with building materials and installation techniques that increase resistance to heat, flames, and flying embers.

RELATIVE COST AND PRIORITY LEVEL OF HOME HARDENING FEATURES FOR FIRE-RESISTANCE



Relative cost: Indicates the relative cost of upgrading the listed features to ember-resistant materials and design.

Priority level: Indicates the features most vulnerable to wildfires and embers. Keep in mind each situation is unique and may change your priority level.



IMAGE BY JANNIKE ALLEN

Sign up for a free on-site Wildfire Mitigation Review

Trained volunteers will provide recommendations for actions to improve the survivability of your home in case of wildfire.

www.yubafiresafe.org/wildfiremitigation-advisor-program

Check yubafiresafe.org for information on home hardening assistance programs.



IMAGE BY AVANTI CENTRAE

BOX IN EAVES



IMAGE BY JANNIKE ALLEN

LOW COST, HIGH BENEFIT:



IMAGE BY GARY FILDES

Cover gutters: Install non-combustible leaf guards over gutters to prevent the accumulation of combustible debris.



IMAGE BY JANNIKE ALLEN

Cover vents: Install metal mesh screens with a maximum opening of 1/8 inch over vents to keep most embers out.

JANUARY

SU	MO	TU	WE	TH	FR	SA
1	2	3	4	5	6	7
8	9	10	11	12	13	14
15	16	17	18	19	20	21
22	23	24	25	26	27	28
29	30	31				

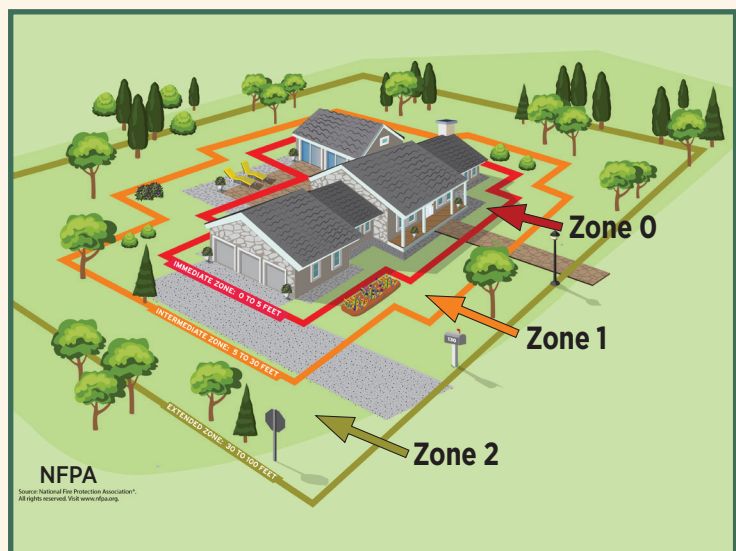
FEBRUARY 2023

MARCH

SU	MO	TU	WE	TH	FR	SA
			1	2	3	4
5	6	7	8	9	10	11
12	13	14	15	16	17	18
19	20	21	22	23	24	25
26	27	28	29	30	31	

SUNDAY	MONDAY	TUESDAY	WEDNESDAY	THURSDAY	FRIDAY	SATURDAY
			1	2 GROUNDHOG DAY	3	4
5 FULL MOON ○	6	7	8	9	10	11
12	13	14 VALENTINE'S DAY	15	16	17	18
19 NEW MOON ●	20 PRESIDENT'S DAY	21	22	23	24	25
26	27	28				

DEFENSIBLE SPACE



DEFENSIBLE SPACE is the buffer you create through the careful selection, location and maintenance of vegetation and other combustible materials (fuels) around a residence.

The priority is to **start at the house and work outward** giving the greatest effort to eliminating combustible vegetation and other materials within five feet of the house and any attached decks.

Why Defensible Space?

1. **Minimize the pathways** wildfire can burn directly to the home
2. **Reduce radiant heat exposures** to the home and structures
3. Reduce the potential for **embers to ignite vegetation** adjacent to the home
4. Provide a **safe place for fire personnel** to defend the home and allow for safe routes for evacuation.



IMAGE BY JANNIKE ALLEN

Zone 0: Nonflammable landscaping 0-5 Ft from house.



IMAGE BY JANNIKE ALLEN



IMAGE BY JANNIKE ALLEN

Zone 1: Space vegetation so that fire doesn't have a continuous fuel path to the home.



IMAGE BY JANNIKE ALLEN

Zone 2: Reduce vegetation out to 100 ft and along your driveway

Check yubafiresafe.org for information on defensible space assistance programs.

FEBRUARY

SU	MO	TU	WE	TH	FR	SA
			1	2	3	4
5	6	7	8	9	10	11
12	13	14	15	16	17	18
19	20	21	22	23	24	25
26	27	28				

MARCH 2023

APRIL

SU	MO	TU	WE	TH	FR	SA
						1
2	3	4	5	6	7	8
9	10	11	12	13	14	15
16	17	18	19	20	21	22
23	24	25	26	27	28	29
30						

SUNDAY	MONDAY	TUESDAY	WEDNESDAY	THURSDAY	FRIDAY	SATURDAY
			1	2	3	4
5	6	7 FULL MOON ○ HOLI	8	9	10	11
12	13	14 PI DAY	15	16	17 ST. PATRICK'S DAY	18
19	20 SPRING EQUINOX	21 NEW MOON ●	22 RAMADAN BEGINS	23	24	25
26	27	28	29	30	31	

FIRE RESISTANT LANDSCAPING - RIGHT PLANT, RIGHT PLACE

Home landscaping in the fire-prone foothills of Yuba County requires a combination of skill and knowledge, as well as a bit of artistry. **Any** plant can be flammable—it's a matter of *“right plant, right place.”*

Where to plant:

Minimize the movement of fire from vegetation to the home by avoiding plants in the following locations:

- Adjacent to the siding
- Under vents or eaves
- Overhanging tree limbs near the roof/chimney
- Under or near decks
- Under or near windows

Key considerations of fire-resistant landscaping:

- Specific plant characteristics
- Plant interactions with nearby structures and plants.
- The landowner's ability to maintain the vegetation – water well and keep it pruned.
- All plants can burn in the wrong conditions, so plan landscaping with defensible space in mind.

Fire resistant plant characteristics:

- High moisture content in leaves
- Slow accumulation of dead vegetation
- Open branching patterns
- Slow growing
- Non-resinous features



IMAGE BY RICK SATOMI



IMAGE BY RICK SATOMI

Vegetation maintenance is key to fire resistant landscaping.

Fire Resistant and Fire-Prone Plants

Fire-Resistant Plants:

- Aloe
- Agave
- Iris
- Sword fern
- Roses
- Western Redbud
- California Poppy
- Pomegranate



Fire-Prone Plants:

- Bamboo
- Eucalyptus
- Rosemary
- Lavender
- Juniper
- Pines, Firs, and Cedars
- Sage
- Lemon Balm



Bark Mulch can ignite and carry fire to your home, consider non-flammable decorative rock.



For more information about Fire Resistant Landscaping visit anrcatalog.ucanr.edu/pdf/8228.pdf

MARCH

SU	MO	TU	WE	TH	FR	SA
			1	2	3	4
5	6	7	8	9	10	11
12	13	14	15	16	17	18
19	20	21	22	23	24	25
26	27	28	29	30	31	

APRIL 2023

MAY

SU	MO	TU	WE	TH	FR	SA
	1	2	3	4	5	6
7	8	9	10	11	12	13
14	15	16	17	18	19	20
21	22	23	24	25	26	27
28	29	30	31			

SUNDAY	MONDAY	TUESDAY	WEDNESDAY	THURSDAY	FRIDAY	SATURDAY
						1 APRIL FOOL'S DAY
2 EASTER SUNDAY	3	4	5 FULL MOON ○ PASSOVER BEGINS AT SUNSET	6	7 GOOD FRIDAY	8
9	10	11	12	13	14	15
16	17	18 TAX DAY	19 NEW MOON ●	20	21 EID AL-FITR BEGINS	22 EARTH DAY EID AL-FITR
23	24	25	26	27	28	29
30 WILDFIRE COMMUNITY PREPAREDNESS WEEK BEGINS						

MAY IS NATIONAL WILDFIRE PREPAREDNESS MONTH

Work with your neighbors to prepare for wildfire:



IMAGE BY BEVERLY CAMERON FILDES

Reduce Fuels: Host a community work day to reduce hazardous fuels together. Check yubafiresafe.org for assistance opportunities.



IMAGE BY BEVERLY CAMERON FILDES

Maintenance Check: Perform an annual check of your home's building envelope—caulking and weatherstripping, wooden deck boards, paint, and gaps that may develop in siding all need regular maintenance to stay fire safe. Cleaning debris from roof and gutters may be needed multiple times per year.



IMAGE BY JANNIKE ALLEN

Learn: Volunteers with our Wildfire Mitigation Review Program will show you fire safe improvements you can make around your own home and neighborhood. SIGN UP: www.yubafiresafe.org/wildfire-mitigation-advisor-program



Check-In: Help elderly neighbors prepare an evacuation plan or reduce fuels around their home. Create a buddy system to support each other in case of emergency.



FIREWISE USA®
Residents reducing wildfire risks

Organize: Work with neighbors to create a Firewise USA® Site. It's about planning and making progress, not perfection. Contact YWPFSC for help with the process.



Get Kids Involved: Involve your kids, grandkids, or family friends in your annual wildfire season prep. Kids have a lot to contribute and will help us build a culture of living with wildfire. Check with YWPFSC for Wildfire Resilience curriculum or summer project ideas.

APRIL

SU	MO	TU	WE	TH	FR	SA
						1
2	3	4	5	6	7	8
9	10	11	12	13	14	15
16	17	18	19	20	21	22
23	24	25	26	27	28	29
30						

MAY 2023

JUNE

SU	MO	TU	WE	TH	FR	SA
				1	2	3
4	5	6	7	8	9	0
11	12	13	14	15	16	17
18	19	20	21	22	23	24
25	26	27	28	29	30	

SUNDAY	MONDAY	TUESDAY	WEDNESDAY	THURSDAY	FRIDAY	SATURDAY
	1	2	3	4	5 FULL MOON ☾	6 WILDFIRE COMMUNITY PREPAREDNESS DAY
7	8	9	10	11	12	13
14 MOTHER'S DAY	15	16	17	18	19 NEW MOON ●	20
21	22	23	24	25	26	27
28	29 MEMORIAL DAY	30	31			

PLAYING IT SAFE IN THE SUMMER

Whether your summer plans include faraway trips or a local staycation, make sure you have these in place to kick your summer off right:

Code Red: Sign up for Code Red in Yuba County or the emergency notification service used by the county you're visiting, so authorities can alert you to wildfires and evacuation warnings.



You can visit **BePreparedYuba.org** before and during emergencies for information.

IMAGE BY BEVERLY CAMERON FILDES



Evacuation Tags: If you have time when evacuating from home, place the tag in a highly visible location such as a mailbox, address sign, door, fence, or gate. This will help first responders save time and save lives in an emergency. Tag locations are documented and removed quickly to keep evacuation zones and your property safe.

Red Flag Warnings:

The National Weather Service issues Red Flag Warnings when weather conditions are especially dangerous, including strong winds, low humidity, and dry fuels. Watch for Red Flags along roadsides in Yuba County, and check wrh.noaa.gov/map for updates. They're a reminder to not mow, weld, park in tall grass, or other activities that could spark a fire.



Evacuation Zones and Maps:

Know your zone where you live or play: community.zonehaven.com, and carry a paper map to highlight evacuation routes without cell service.



Tow Chain Covers: When towing a boat, horses, RV, utility, or any other trailer, always cover your trailer chains to prevent sparks, and carry a fire extinguisher in your vehicle. Pick up free tow chain covers at shops and boat ramps around Yuba County. Visit yubafiresafe.org/no-spark-tow-chain-covers for more information.



IMAGE BY BEVERLY CAMERON FILDES



IMAGE BY ALEX BOESCH

Responsible Campfires: Some campgrounds allow campfires in designated fire rings in the summer. If you have a campfire, stay safe with these tips:

- Check with campground host or local authority on current rules or burn bans.
- Do not leave your campfire unattended.
- If winds pick up, put the fire out.
- Keep water and a shovel nearby and know how to use them to put out your campfire.
- Spread - Wet - Stir - Repeat Until Cold



MAY

SU	MO	TU	WE	TH	FR	SA
	1	2	3	4	5	6
7	8	9	10	11	12	13
14	15	16	17	18	19	20
21	22	23	24	25	26	27
28	29	30	31			

JUNE 2023

JULY

SU	MO	TU	WE	TH	FR	SA
						1
2	3	4	5	6	7	8
9	10	11	12	13	14	15
16	17	18	19	20	21	22
23	24	25	26	27	28	29
30	31					

SUNDAY	MONDAY	TUESDAY	WEDNESDAY	THURSDAY	FRIDAY	SATURDAY
				1	2	3 FULL MOON ☾
4	5	6	7	8	9	10
11	12	13	14 FLAG DAY	15	16	17 NEW MOON ☀
18 FATHER'S DAY	19 JUNETEENTH	20	21 SUMMER SOLSTICE	22	23	24
25	26	27	28 EID AL-ADHA BEGINS	29 EID AL-ADHA	30	

WILDFIRE EVACUATION CHECKLIST

Review this information now to prepare yourself for a quick and safe evacuation.

TO-GO BAG ESSENTIALS:

- ☐ Important documents (bank, IRS, trust, investment, insurance policy, birth certificates, medical records)
- ☐ ATM, credit and debit cards
- ☐ Medications
- ☐ Prescription glasses
- ☐ Driver's license
- ☐ Passport
- ☐ Computer backup files
- ☐ Inventory of home contents (consider making a video inventory now, prior to an emergency)
- ☐ Photographs of the exterior of the house and landscape
- ☐ Address book
- ☐ Cell phone charger
- ☐ Portable Radio
- ☐ Personal toiletries
- ☐ Enough clothing for 3-5 days
- ☐ Family heirlooms, photo albums and videos.

WHAT TO WEAR:

- ☐ Wear only cotton or wool clothes, including long pants, long-sleeved shirt or jacket, a hat, and boots.
- ☐ Carry gloves, an N95 mask or handkerchief to cover your face, water to drink, and goggles.
- ☐ Keep your cell phone, a flashlight, and portable radio with you at all times.
- ☐ Tune in to a local radio station and listen for instructions.

PREPARE FAMILY MEMBERS, PETS, AND LIVESTOCK:

- ☐ If possible, evacuate all family members not essential to preparing the house for wildfire.
- ☐ Plan several evacuation routes from your home.
- ☐ Designate a safe meeting place and contact person.
- ☐ Relay your plans to a contact person.
- ☐ Evacuate pets and livestock whenever possible and never turn the animals loose.
- ☐ Notify your local Humane Society or other organizations for assistance with animals if needed.
- ☐ Be aware of your emergency notification system such as reverse 911.

PREPARE VEHICLE:

- ☐ If you can lift your garage door manually, place vehicle in the garage pointing out with the keys in the ignition and disconnect the electric garage door opener. If not, park in your driveway facing out.
- ☐ Roll up the car windows.
- ☐ Close the garage door, but leave it unlocked.
- ☐ Place essential items in the car.
- ☐ If you do not drive, make other arrangements for transportation in advance.

Be prepared!

It will likely be dark, smoky, windy, and hot. There may be airborne burning embers, no power or telephone, and poor water pressure. Remember, nothing you own is worth your life! **Please evacuate immediately when asked.**

INSIDE THE HOME:

- ☐ Close all interior doors.
- ☐ Leave a light on in each room.
- ☐ Remove lightweight, non-fire-resistant curtains and other combustible materials from around windows.
- ☐ Close fire-resistant drapes, shutters, and blinds.
- ☐ Turn off all pilot lights.
- ☐ Move over-stuffed furniture, such as couches and easy chairs, to the center of the room.
- ☐ Close fireplace damper.
- ☐ Close or block off any doggie-doors.

OUTSIDE THE HOME:

- ☐ Place combustible patio furniture in the house or garage.
- ☐ Shut off propane at the tank or natural gas at the meter.
- ☐ Close all exterior vents, doors, and windows.
- ☐ Prop a non-combustible ladder against the house to provide firefighters with easy access to the roof.
- ☐ Make sure that all garden hoses are connected to faucets and attach nozzles set on "spray".
- ☐ Leave exterior doors and gates unlocked.
- ☐ Turn on outside lights.
- ☐ If available and if there's time, cover windows, attic openings, and vents with plywood that is at least one-half inch thick.
- ☐ Fill trash cans and buckets with water and place where firefighters can find them.

JUNE

SU	MO	TU	WE	TH	FR	SA
				1	2	3
4	5	6	7	8	9	0
11	12	13	14	15	16	17
18	19	20	21	22	23	24
25	26	27	28	29	30	

JULY 2023

AUGUST

SU	MO	TU	WE	TH	FR	SA
		1	2	3	4	5
6	7	8	9	10	11	12
13	14	15	16	17	18	19
20	21	22	23	24	25	26
27	28	29	30	31		

SUNDAY	MONDAY	TUESDAY	WEDNESDAY	THURSDAY	FRIDAY	SATURDAY
						1
2	3 FULL MOON ☉	4 INDEPENDENCE DAY	5	6	7	8
9	10	11	12	13	14	15
16	17 NEW MOON ●	18	19	20	21	22
23 PARENTS' DAY	24	25	26	27	28	29
30	31					

LIVING WITH FIRE

Protect Your Health from Wildfire Smoke

Wildfire smoke can cause negative health effects such as headache, shortness of breath, and dampened immune system. Limit your exposure to fine particulate matter (PM 2.5) from wildfires to protect your health.

- Check current local air quality (map.purpleair.com, fire.airnow.gov), which may be at poor levels without smelling smoky. Stay indoors when air quality is poor outside.
- If you must be outdoors in smoke, wear a tight sealing N95 or P100 mask and limit physical activity.
- Filter your indoor air by buying a HEPA filter air purifier or creating a DIY air purifier (tinyurl.com/TSFcleanair).

Scan with your phone camera
for air quality information:



Purple Air



AirNow.gov

TIP

Buy supplies proactively - once it gets smoky stores may run out of N95 masks and home air filters.



IMAGE BY JANNIKE ALLEN

TIP

Home maintenance protects your home from both embers and smoke. Replace caulking, seal cracks, and install weather stripping to maintain healthy indoor air quality.



IMAGE BY FRANK DENATALE

Prepare for Power Outages: the grid may be turned off during wildfires and Public Safety Power Outages (PSPS).

- Freeze extra blocks of ice to keep your fridge and freezer cool.
- Prepare an emergency kit with water to last several days, flashlights, first aid kit, portable cell phone charger, corded telephone for landline use, weather alert radio, and food. *Much of this can double as your evacuation go-bag.*

During a Power Outage:

- Put ice in fridge, keep it as full as possible, and keep door closed.
- Unplug electronics and when power is restored turn appliances back on one at a time to monitor for damage and avoid stressing the grid.
- Visit a cooling center if your home becomes too hot.



TIP

Freeze water in a small cup and place a penny on top of the ice. After the power outage, check if your penny fell to the bottom of your ice cup to know if your frozen goods thawed and re-froze (if so, discard sensitive foods such as meat).



IMAGE BY JANNIKE ALLEN

JULY

SU	MO	TU	WE	TH	FR	SA
						1
2	3	4	5	6	7	8
9	10	11	12	13	14	15
16	17	18	19	20	21	22
23	24	25	26	27	28	29
30	31					

AUGUST 2023

SEPTEMBER

SU	MO	TU	WE	TH	FR	SA
						1 2
3	4	5	6	7	8	9
10	11	12	13	14	15	16
17	18	19	20	21	22	23
24	25	26	27	28	29	30

SUNDAY	MONDAY	TUESDAY	WEDNESDAY	THURSDAY	FRIDAY	SATURDAY
		1 <small>FULL MOON ○</small>	2	3	4	5
6	7	8	9	10	11	12
13	14	15	16 <small>NEW MOON ●</small>	17	18	19
20	21	22	23	24	25	26
27	28	29	30 <small>FULL MOON ○</small>	31		

GET INVOLVED IN WILDFIRE RESILIENCE

YWPFSC has many opportunities to support community wildfire preparedness.
Check out one or all of these opportunities at www.yubafiresafe.org.

VOLUNTEER OPPORTUNITIES

Contact info@yubafiresafe.org to volunteer with us!

Volunteer at the Oregon Peak Lookout

While many areas rely on cameras to help spot fires, it's hard to deny the value of having live "eyes on the Foothills". Oregon Peak Lookout has been in operation for over 30 years. Restored, maintained and manned by the community members through the

Volunteers in Prevention (VIP) program, it is the only staffed lookout tower in Yuba County. Learn how to join our team: www.yubafiresafe.org/lookout-volunteers

Join the Outreach & Education Committee

Connect with the community by volunteering at events, delivering address signs or tow chain covers, and spreading the word about wildfire preparedness in the foothills.



IMAGE BY JANNIKE ALLEN

Become a Wildfire Mitigation Advisor

Receive training on home hardening and defensible space, and share that knowledge to help residents improve the wildfire resilience of their homes.

Become a Volunteer Firefighter

Contact your local volunteer fire department for volunteer and training



opportunities. See the last page of this calendar for contact information.

RESIDENTIAL PROGRAMS

Contact programs@yubafiresafe.org to learn more!

Residential Chipping Program

Create defensible space around your home and we'll help you chip it! Improve air quality and wildfire risk by not waiting for pile burning season.



IMAGE BY CALEB GARLING

Reflective Address Signs

Help first responders help you! Reflective address signs aid emergency personnel in finding homes during emergencies & evacuations, helping them protect lives and property.



IMAGE BY PAMELA COOK

Community-Scale Fuel Reduction

YWPFSC is working hard to implement multiple large scale fuel reduction projects across the Yuba Foothills. Learn what's happening in your neighborhood by attending Fire Safe Council meetings – dates and times are posted at www.yubafiresafe.org.



IMAGE BY CHRIS HAILE



IMAGE BY JANNIKE ALLEN

Firewise USA Communities

Join with your neighbors to become a Firewise community

- Firewise USA is a national program that encourages neighbors to take action to improve community wildfire resilience.
- Recognized Firewise Sites may be eligible for discounts on homeowners insurance & grants for fuels reduction work.
- YWPFSC can help guide your community through the Firewise process.

AUGUST

SU	MO	TU	WE	TH	FR	SA
		1	2	3	4	5
6	7	8	9	10	11	12
13	14	15	16	17	18	19
20	21	22	23	24	25	26
27	28	29	30	31		

SEPTEMBER 2023

OCTOBER

SU	MO	TU	WE	TH	FR	SA
1	2	3	4	5	6	7
8	9	10	11	12	13	14
15	16	17	18	19	20	21
22	23	24	25	26	27	28
29	30	31				

SUNDAY	MONDAY	TUESDAY	WEDNESDAY	THURSDAY	FRIDAY	SATURDAY
					1	2
3	4	5 LABOR DAY	6	7	8	9
10	11	12	13	14 NEW MOON ●	15 ROSH HASHANA BEGINS AT SUNSET	16
17 ROSH HASHANA ENDS	18	19	20	21	22 CALIFORNIA NATIVE AMERICAN DAY	23 NATIONAL PUBLIC LANDS DAY AUTUMN EQUINOX
24 YOM KIPPUR BEGINS AT SUNSET	25 YOM KIPPUR	26	27	28	29 FULL MOON ○	30

THANK YOU FIREFIGHTERS!

Camptonville • Dobbins-Oregon House • Foothill • Loma Rica-Browns Valley • Smartsville



SEPTEMBER

SU	MO	TU	WE	TH	FR	SA
					1	2
3	4	5	6	7	8	9
10	11	12	13	14	15	16
17	18	19	20	21	22	23
24	25	26	27	28	29	30

OCTOBER 2023

NOVEMBER

SU	MO	TU	WE	TH	FR	SA
			1	2	3	4
5	6	7	8	9	10	11
12	13	14	15	16	17	18
19	20	21	22	23	24	25
26	27	28	29	30		

SUNDAY	MONDAY	TUESDAY	WEDNESDAY	THURSDAY	FRIDAY	SATURDAY
1	2	3	4	5	6	7
8	9 COLUMBUS DAY INDIGENOUS PEOPLE'S DAY	10	11	12	13	14 NEW MOON ●
15	16 NATIONAL FOREST PRODUCTS WEEK	17	18	19 NATIONAL BIOENERGY DAY	20	21
22	23	24	25	26	27	28 FULL MOON ○
29	30	31 HALLOWEEN				

PARTNERSHIPS FOR WATERSHED RESILIENCE



IMAGE BY DEBBIE ASELTINE NEILSON

Yuba County Resource Conservation District

Resource Conservation Districts (RCDs) are “special districts” of the state of California, set up under California law to be locally governed agencies. RCDs assist landowners, land managers, and communities by implementing projects on public and private lands within their district that conserve natural resources and educate landowners and the public about resource conservation.

Yuba County RCD (YCRCD)’s present mission is to work with Yuba County landowners and communities to address local resource conservation concerns, including increasing farm, range, and forest sustainability, habitat improvement, and assisting landowners and land managers with wildfire hazard mitigation.

For more information about YCRCD and opportunities for engaging in local resource conservation, check out the YCRCD website at www.yubarcd.org



IMAGE BY CHRIS HAILE

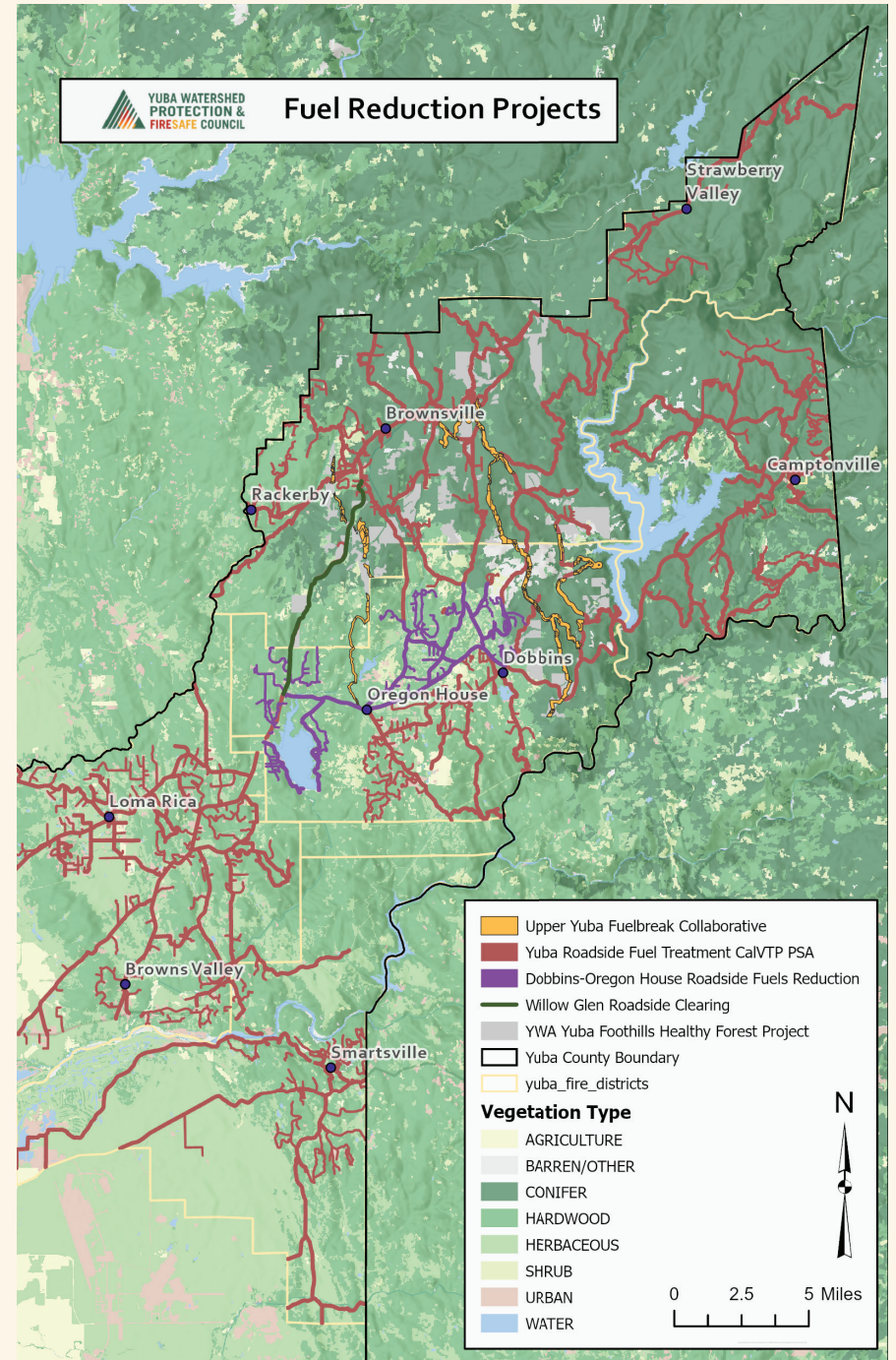
Yuba Watershed Protection and Fire Safe Council (YWPFS)

facilitates collaboration throughout the Yuba County foothills to proactively build watershed and community resilience to wildfire by educating and empowering residents, implementing community-level mitigation projects, and supporting the integrity of our natural resources.

YWPFS partners with local landowners and organizations such as YCRCD to implement projects that support our communities and the surrounding watersheds.



IMAGE BY DEBBIE ASELTINE NEILSON



OCTOBER

SU	MO	TU	WE	TH	FR	SA
1	2	3	4	5	6	7
8	9	10	11	12	13	14
15	16	17	18	19	20	21
22	23	24	25	26	27	28
29	30	31				

NOVEMBER 2023

DECEMBER

SU	MO	TU	WE	TH	FR	SA
					1	2
3	4	5	6	7	8	9
10	11	12	13	14	15	16
17	18	19	20	21	22	23
24	25	26	27	28	29	30
31						

SUNDAY	MONDAY	TUESDAY	WEDNESDAY	THURSDAY	FRIDAY	SATURDAY
			1	2	3	4
5	6 ELECTION DAY	7	8	9	10	11 VETERANS DAY
12 DIWALI/DEEPAVALI	13 NEW MOON ●	14	15	16	17	18
19	20	21	22	23 THANKSGIVING DAY	24 NATIVE AMERICAN HERITAGE DAY	25
26	27 FULL MOON ○	28	29	30		

FIRE SAFE GIFTING

Holiday Gift Ideas

Emergency Go-Kit:

- ✓ Emergency radio with alerts
- ✓ Pre-made emergency kit
- ✓ Printed local map
- ✓ Subscription to cloud data storage
- ✓ First aid kit
- ✓ Headlamp
- ✓ Cell phone battery backup
- ✓ HEPA or MERV 13 filter & N95 masks for smoky days
- ✓ Vehicle Fire Extinguisher
- ✓ Tow chain covers
- ✓ Fire resistant plants

Tools for defensible space maintenance:

- ✓ Loppers
- ✓ Chainsaws
- ✓ Leaf bags
- ✓ Leaf blower
- ✓ Leather gloves
- ✓ Rake

Gifts of Time:

- ✓ IOU to create defensible space
- ✓ 3 hours of weedwacking
- ✓ YWPFS Coupon Book



NOVEMBER

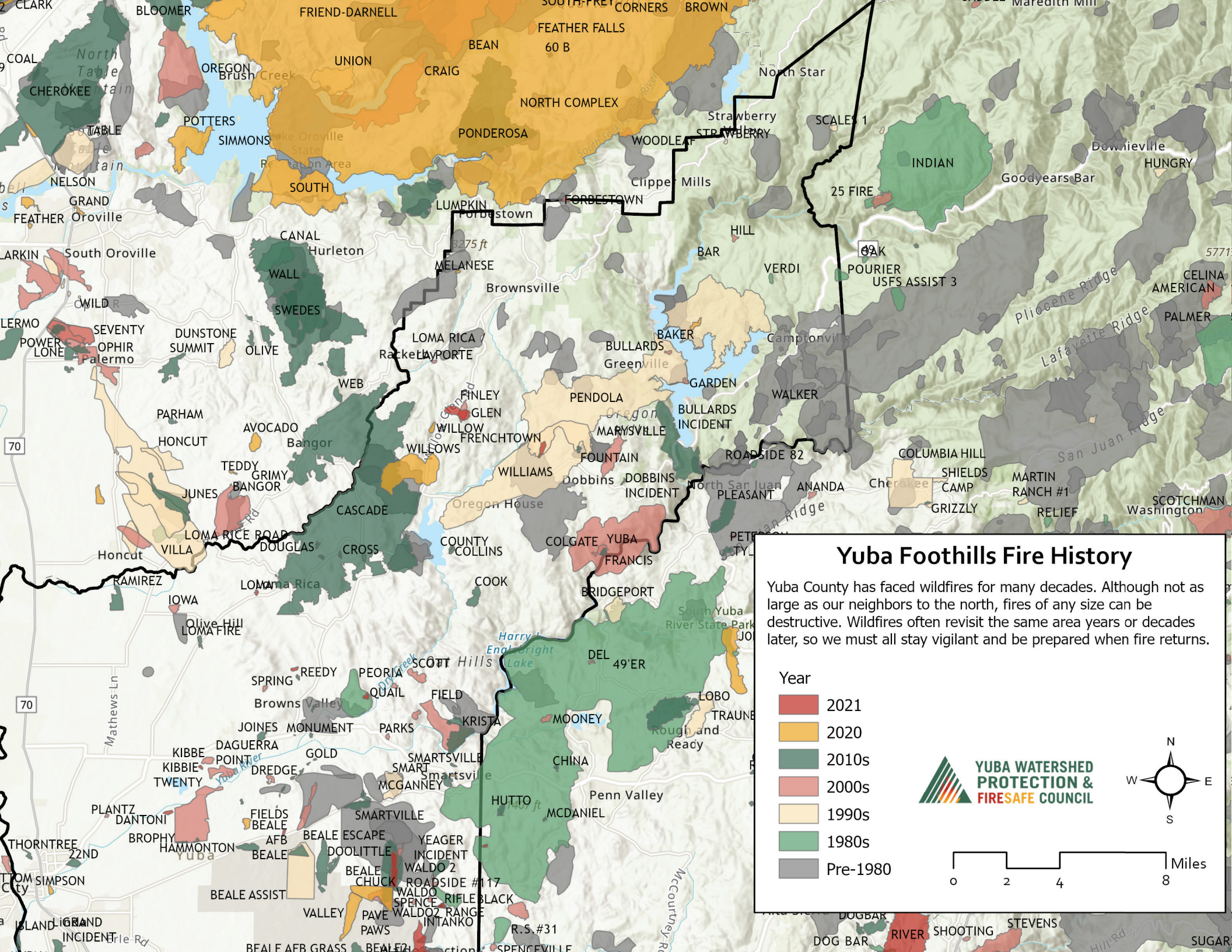
SU	MO	TU	WE	TH	FR	SA
			1	2	3	4
5	6	7	8	9	10	11
12	13	14	15	16	17	18
19	20	21	22	23	24	25
26	27	28	29	30		

DECEMBER 2023

JANUARY

SU	MO	TU	WE	TH	FR	SA
	1	2	3	4	5	6
7	8	9	10	11	12	13
14	15	16	17	18	19	20
21	22	23	24	25	26	27
28	29	30	31			

SUNDAY	MONDAY	TUESDAY	WEDNESDAY	THURSDAY	FRIDAY	SATURDAY
					1	2
3	4	5	6	7	8	9
				HANUKKAH BEGINS AT SUNSET		
10	11	12 NEW MOON ●	13	14	15	16
17	18	19	20	21	22	23
				WINTER SOLSTICE		
24	25	26 FULL MOON ○	27	28	29	30
	CHRISTMAS DAY	KWANZAA (FIRST DAY)				
31 NEW YEAR'S EVE						

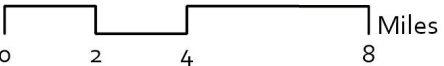
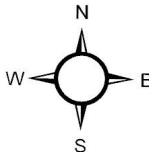


Yuba Foothills Fire History

Yuba County has faced wildfires for many decades. Although not as large as our neighbors to the north, fires of any size can be destructive. Wildfires often revisit the same area years or decades later, so we must all stay vigilant and be prepared when fire returns.

Year

- 2021
- 2020
- 2010s
- 2000s
- 1990s
- 1980s
- Pre-1980



FOR ANY EMERGENCY: CALL 911

RURAL FIRE DEPARTMENTS

**Camptonville Volunteer
Fire Department**
15410 Mill Street
Camptonville, CA 95922
(530) 288-0207

**Dobbins - Oregon House
Fire Protection District**
9162 Marysville Rd
Oregon House, CA 95962
(530) 692-2255
www.dohfd.com

Foothill Fire Protection District
16796 Willow Glen Rd
Brownsville, CA 95919
(530) 675-0633
www.ffpd.net

**Loma Rica - Browns Valley
Fire Department**
11485 Loma Rica Rd
Loma Rica, CA 95901
(530) 741-0755
lrbvfire.org

Smartsville Fire Protection District
8459 Blue Gravel Rd
Smartsville, CA 95977
(530) 639-0405

**CAL FIRE Nevada-Yuba-Placer
Unit - Dobbins**
9946 Marysville Rd.
Dobbins, CA 95935
(530) 692-1616

**CAL FIRE Nevada-Yuba-Placer
Unit - Loma Rica**
11485 Loma Rica Rd
Marysville, CA 95901
(530) 743-4477

**CAL FIRE Nevada-Yuba-Placer
Unit - Smartsville**
8839 Hwy 20
Smartsville, CA 95977
(530) 639-0405

CAL FIRE Unit Headquarters-Auburn
(530) 889-0111

**US Forest Service -Tahoe NF
Yuba River Ranger District**
15924 Hwy 49, Camptonville, CA 95922
(530) 288-3231

**US Forest Service - Tahoe NF
Supervisor's Office**
631 Coyote St.
Nevada City, CA 95959
(530) 265-4531

**US Forest Service - Plumas NF
Feather River Ranger District**
875 Mitchell Ave
Oroville, CA 95965
(530) 534-6500

**Feather River Air Quality
Management District**
www.fraqmd.org
Residential Burn Status: 530-741-6299
Agricultural Burn Status: 530-634-7659 ext. 201
Complaints: complaints@fraqmd.org

Yuba County Fire Prevention Officer
(530) 749-5618

Yuba County Sheriff
(530) 749-7777

Yuba County OES
(530) 749-7520
www.bepreparedyuba.org



Yuba County Public Works
(530) 749-5420

Yuba County Assessor
(530) 749-7820

**Yuba Watershed Protection
& Fire Safe Council**
(530) 645-2236
info@yubafiresafe.org
www.yubafiresafe.org





IMAGE BY ALEX BOESCH

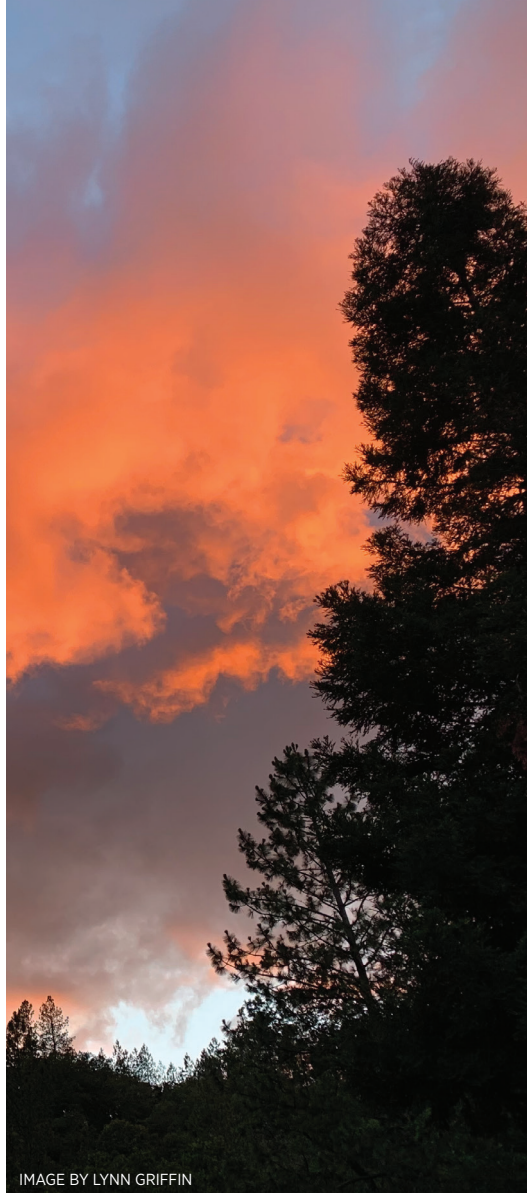


IMAGE BY LYNN GRIFFIN



IMAGE BY BEVERLY CAMERON FILDES

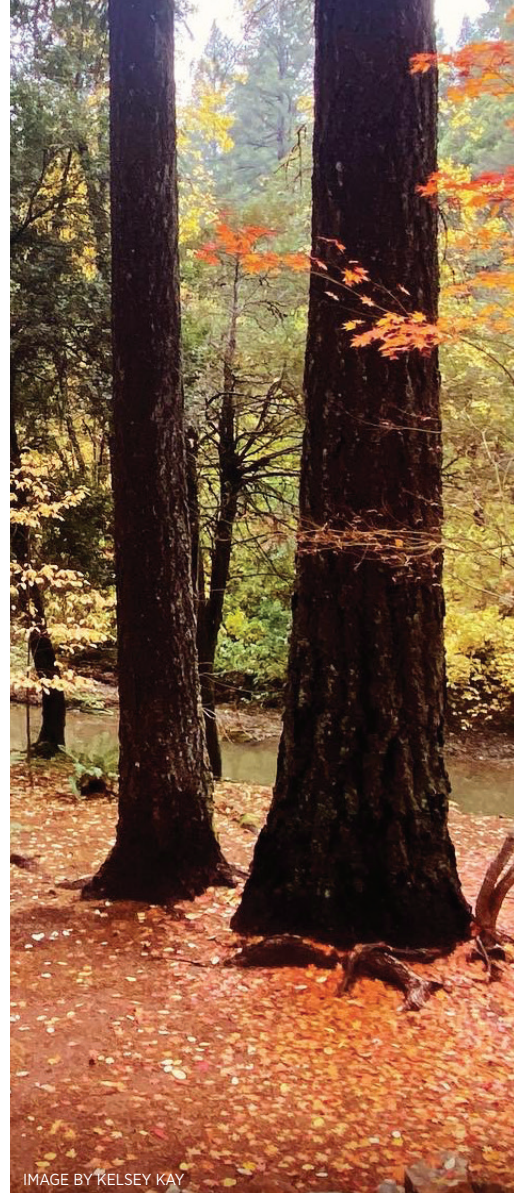


IMAGE BY KELSEY KAY

